



Jingle That

Conceived by Katy Blake & Eddie Reichert Musical
arrangements by Eddie Reichert & Ryan McCurdy
Directed by Katy Blake
Musically Directed by Ryan McCurdy



Jingle That



Merry Christmas, Darling

Richard Carpenter & Frank Pooler

It's Beginning To Look A Lot Like Christmas

Meredith Willson



THE PARTY MEDLEY

Wonderful Christmastime

McCartney

Ding Dong! Merrily On High

George Ratcliffe Woodward

Happy Xmas (War Is Over)

John Lennon & Yoko Ono

Rockin' Around the Christmas Tree

Johnny Marks



I Saw Mommy Kissing Santa Claus

Tommie Connor

Santa Claus Is Comin' to Town

J. Fred Coots & Haven Gillespie

(arr. Bruce Springsteen)

Where Are You Christmas?

Will Jennings, James Horner, & Mariah Carey

The Christmas Song

Mel Tormé & Robert Wells

A Brand New Holiday Song

McCurdy



THE CHRISTMAS STORY

The Angel Gabriel

Traditional

Mary, Did You Know?

Mark Lowry & Buddy Greene

Angels We Have Heard On High

Traditional

The Little Drummer Boy /Peace On Earth

Traditional / Ian Fraser, Larry Grossman, & Alan Kohan

Little Town

Chris Eaton & Amy Grant

El cant dels ocells (The Song of the Birds)

Traditional

Silent Night

Franz Xaver Gruber & Joseph Mohr



THE SNOW MEDLEY

Let It Snow! Let It Snow! Let It Snow!

Jule Styne & Sammy Cahn

Landslide

Stevie Nicks

Frosty the Snowman

Walter "Jack" Rollins & Steve Nelson

Cold as Ice

Lou Gramm & Mick Jones

White Christmas

Irving Berlin

A Hazy Shade of Winter

Paul Simon

Sleigh Ride

Leroy Anderson & Mitchell Parish

Immigrant Song

Jimmy Page & Robert Plant

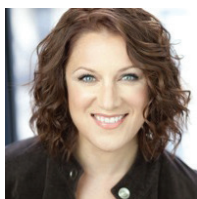
Walking In A Winter Wonderland

Felix Bernard & Richard Bernhard Smith



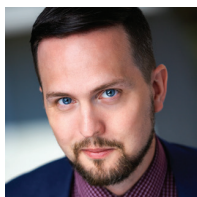
A Holly Jolly Christmas

Johnny Marks



Katy Blake* AEA/SAG/AFTRA

Katy has traveled across the country in the Broadway tours of Evita, The Phantom of the Opera, Mamma Mia, and Whistle Down the Wind. In NYC, she performed in Off-Broadway shows at the York Theatre, Ensemble Studio Theatre, and the Westside Theatre. Regionally, she created the role of "Pam" in CATCO's The Last Smoker in America, and "Sirroco" at Pasadena Playhouse's production of Mask (dir. Richard Maltby, Jr.). She also played the Hollywood Bowl in South Pacific with Reba McEntire. Katy is a writer and her show, Storming Heaven: The Musical was produced at WVPT in 2019. katyblake.com



Ryan McCurdy*

Ryan is an actor-musician and theatrical producer based in New York City. He has worked in a variety of venue and genre settings, including Carnegie Hall, Broadway's Minskoff and New Amsterdam Theatres, The Bitter End, and Town Hall. His work has brought him to Manhattan Theatre Club, Second Stage, Baltimore Center Stage, and Hudson Valley Shakespeare Festival as a performer, designer, and supervisor. Ryan is the executive director of Savannah Repertory Theatre, an associate producer of Bespoke Plays in Los Angeles, and a proud member of Actors' Equity and SAG-AFTRA.



Danny Lemache

Danny is a NYC-based performing artist, educator, and director. Previous credits include Titanic (Milwaukee Repertory Theatre), Moana (Ogunquit Playhouse), El Otro Oz (Forestburgh Playhouse), South Pacific (Texas Family Musicals), West Side Story (The Ghostlight Theatre), Evita (Southern Colorado Rep), and In the Heights (Arts Center of Coastal Carolina). He'd like to extend an enormous thank you to the creative team, crew, and all staff at WVPT for their work on this production. Love to his agents at BLOC Talent. BFA in musical theatre from Montclair State University. Instagram: [@dannylemache](https://www.instagram.com/dannylemache) | dannylemache.com



Eryk Bluto

Eryk is thrilled to be back with WV Public Theatre (WVPT) for the holiday season! He graduated from WVU in May with a BFA in musical theatre. Some of his recent credits include Orin Scrivello (Little Shop of Horrors), Actor 1 (35MM), and Young Scrooge (A Christmas Carol). Happy Holidays!



Ellen Barneycastle

Ellen is an actor, musician, teacher, and life-long learner based in Atlanta, GA. She most recently finished a seven month long-acting intensive at The Robert Mello Studio. Favorite past roles include Puck (A Midsummer Night's Dream), Lucy (Dracula), and Peter (Peter Pan). When she's not teaching piano or yoga, you can find her flying in the air on a lyra (aerial hoop)! She is so excited to share the joy of Schoolhouse Rock with you! Instagram: [@ellenlindsaybarneycastle](https://www.instagram.com/ellenlindsaybarneycastle)



Evan Oslund

Evan (Production Stage Manager) currently serves as theatre professor and theatre director at Bethany College (WV). He holds his BA in acting from Bethany College and MA in educational theatre from New York University and has worked on productions as an actor, director, and stage manager. Currently directing Radium Girls by D.W. Gregory, opening February 2022, and is the director of Bison on The Spot: Bethany College's house improv comedy troupe. This is his first show working with West Virginia Public Theatre (WVPT) and hopes to have many more! Thanks to Jerry, Aubrey, and everyone at WVPT, Katy and the entire cast for being so awesome to work with! Instagram: [@evanoslund_yay](https://www.instagram.com/evanoslund_yay)

Production & Creative Staff:

Artistic Director - Jerry McGonigle
Director & Co-Creator - Katy Blake
Music Director & Co-Creator - Ryan McCurdy
Scenic Designer - Seret Cole

Production Manager - Evan Oslund
Production Assistant - Aidan Morgan
Sound Engineer - Chuck Kleine

*The actor appears through the courtesy of Actors' Equity Association, the Union of Professional Actors and Stage Managers in the United States.





Jingle That

Oglebay
WHEELING, WV

 THE NEW
West Virginia Public Theatre

Presented by 
WesBanco